

MEDIUM-RISK CONFINED SPACE ENTRY

Goal:

The aim of this unit is to reflect the national occupational standard for a Medium-Risk Confined Space environment. This unit covers both the water and non-watery industry areas.

Target group:

This course is for personnel with no existing Confined Space knowledge who are required to work in a Medium-Risk Confined Space environment where they will be overseen by a qualified entry controller.

Highlights:

- Learn the essentials to work safely in Medium-Risk Confined Spaces.
- Get plenty of hands-on experience in Emergency Breathing Apparatus and in the use of gas monitors.
- Experience simulated emergencies within various classifications of confined spaces to rehearse evacuation procedures.

Description

This course equips delegates with the knowledge to identify and classify Medium-Risk Confined Spaces (meeting definitions of National Classifications 2 & 3), to enter safely and follow safe systems of work. Delegates learn the legal requirements of working in Confined Spaces, learn about safe tool and equipment usage, learn about emergency plans, understand standard protocols for medium-risk Confined Space working, learn about atmospheric hazards and gas monitoring, ventilation methods, emergency breathing apparatus use, vertical access techniques involving work at height PPE and winches, and how to record essential details of Confined Space working. This course contains a lot of theory essential for safe working in these environments, and a written test paper is issued to confirm learning. Following completion, delegates will be qualified to work in NC1-3 medium-risk Confined Spaces. Note that we also offer a 3-day Medium-Risk Confined Space Entrant & Entry Controller Award (City & Guilds 6160-09) which includes all content of this course plus qualifies delegates as entry controllers as well, and is generally recommended as it gives a broader remit and knowledge retention is better following 3 days and more practical exercises over this 2 day course.

Compliance:

Confined Space Regulations 1997, National Occupational Standards for Working in Confined Spaces – EUSCS02

Previous knowledge:

No previous knowledge or experience required.

Requirements:

Age 18+. Participants must be fit for training including ladder climbs and moving through enclosed spaces (crawling is required for short distances)

Progression:

Recertification & Refresher training is recommended every 2 years by means of re-attending this course.

Theoretical elements:

- This course contains classroom sessions covering legal responsibilities, Confined Space classifications, risk assessment and mitigation, atmospheric monitoring, ventilation, emergency procedures and safe systems of work.
- A course manual is issued.
- A written paper is issued which is assessed.

Practical elements:

- Practical sessions will include familiarisation with Emergency Breathing apparatus, using harnesses, tripods, winches and davit arms.
- The theoretical knowledge is put into play through delegates completing work tasks in a number of Medium-Risk (NC2-3) Confined Spaces.
- Toe-capped boots and overalls are a requirement.



Working in Medium-Risk Confined Spaces City & Guilds Level 2 Award 6160-02



Course length

16 hours (2 days)



Instructor


1:6



Period of validity


3 years

Certification

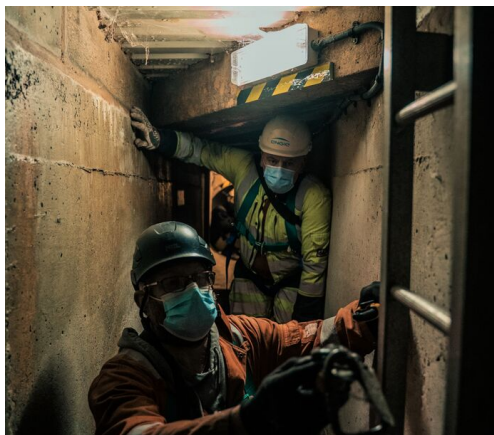


City & Guilds certification is available for an additional fee or an Outreach Rescue Certificate of Achievement issued

Venue



Outreach Rescue, Tan-y-Bwlch Centre, Llanllechid, Bangor, Gwynedd, North Wales LL57 3HY



- All specialist equipment is provided.
- All practical elements are holistically assessed throughout the course.